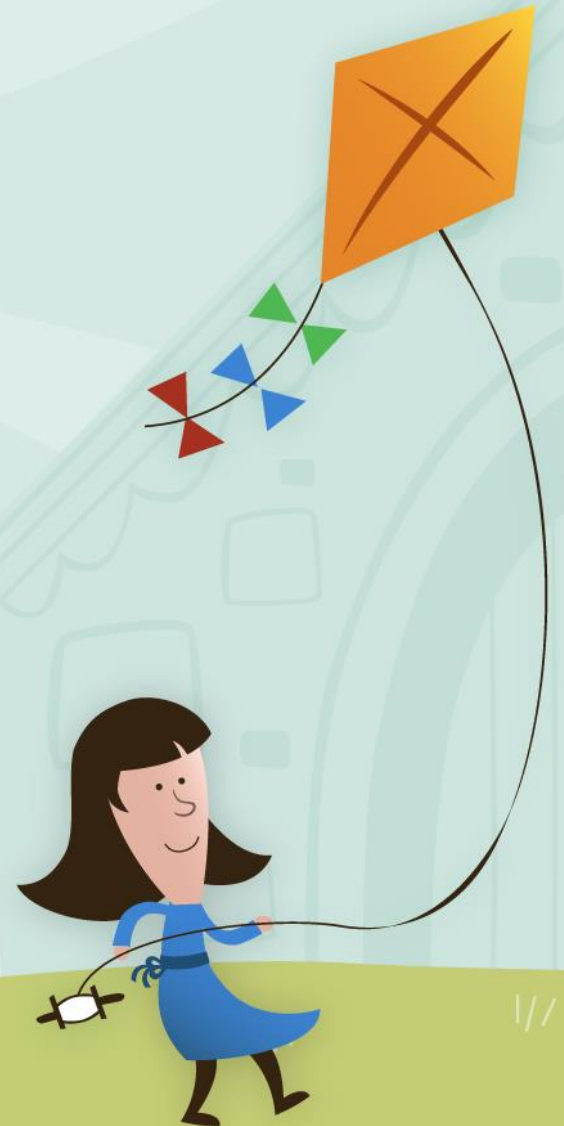


# Welcome to Year 3 at Crestwood Park



# HOME-SCHOOL AGREEMENT

As a school we will:

<b>S MART</b>	Provide a professional but approachable, friendly environment where staff work in partnership with parents/carers to provide high quality care and education.
<b>P OLITE</b>	Encourage your child to take responsibility for their words and actions, encouraging them to develop positive relationships.
<b>A WARE</b>	Always reflect on ways to improve our teaching and school to ensure the best education for children. This includes being aware of, and acting upon, the well-being and mental health needs of our children.
<b>R ESPECTFUL</b>	Show respect by listening to children and parents, ensuring children are supported to learn both at school and at home.
<b>K IND</b>	Use rewards and sanctions fairly. We will not tolerate bullying of any kind
<b>S AFE</b>	Establish a safe and stimulating environment rooted in mutual respect; where children feel safe and motivated to learn

You can find this on the school website if you would like to have a read before signing on parents evening.



As children we will:

<b>S MART</b>	Wear our uniform with <b>PRIDE</b> and display a <b>HARD-WORKING</b> attitude.
<b>P OLITE</b>	Be well-mannered and <b>SOCIABLE</b> to others.
<b>A WARE</b>	Be aware of our school motto to 'Be the best' and strive to be <b>RELIABLE</b> , <b>RESOURCEFUL</b> and <b>REFLECTIVE</b> . Be aware of the lessons we are taught to promote our well-being and mental health.
<b>R ESPECTFUL</b>	Show respect for others by listening and following instructions. Respect school property and other people's belongings.
<b>K IND</b>	Be kind, be <b>POSITIVE</b> , not say hurtful things. Keep our hands and feet to ourselves. Avoid using physical contact.
<b>S AFE</b>	Be honest to staff, children, and each other. Know that the adults in school will listen to us and take any concerns we have seriously.

As parents/carers we will:

<b>S MART</b>	Ensure our children arrive at school by <b>8.55am</b> every day and support school policies in relation to school uniform.
<b>P OLITE</b>	Encourage our children to behave well and support the school's Behaviour Policy.
<b>A WARE</b>	Help our children to succeed by helping them at home with learning. This includes reading with them regularly and also working with school to support our children's well-being and mental health.
<b>R ESPECTFUL</b>	Manage our behaviour in and around school, providing mature role-models in how others should be treated.
<b>K IND</b>	Support children, staff and each other creating new friendships and role-modelling positive social skills.
<b>S AFE</b>	Raise any issues in a calm, supportive manner by contacting school directly. Work with the school and model safe and respectful behaviour when using social media.



## A typical day in the life of a year 3 child...

8:40 – 9am: Welcome children and registration task

9-9:30am: Assembly

9:30-10am: SPAG

10-10:45am: English

10:45-11am: Break

11-12pm: TTRS and maths

12-1pm: Lunchtime

1-1:20pm: Reading time

1:20-3pm: Curriculum study

3-3:15pm: Story time

3:20pm: Home time



Subject	Autumn 1	Autumn 2	Spring 1	Spring 2	Summer 1	Summer 2
Reading	Reading skills sessions incorporated into English lessons and taught in isolation on a Wednesday.					
Writing	Description Missing poster Persuasive letter	Newspaper Advertisement Instructions	Setting description Letter	Postcard Narrative	Recount Speech Character description	Monologue Advertisement Poem
Mathematics	Place Value, Addition and Subtraction Multiplication and Division		Multiplication and Division, Length and perimeter, fractions, <u>mass</u> and capacity		Fractions, Money, Time, Shape, Statistics	
Science	Animals including humans	Rocks	Light	Plants	Forces and Magnets	Forces and Magnets
R.E	Special Books and Stories		The Life of Jesus		Prayer and Worship	
Music	Developing Notation Skills- How does music bring us closer together?	Enjoying Improvisation- What stories does music tell us about the past?	Composing using your imagination – How does music make the world a better place?	Sharing musical experiences- How does music help us get to know our community?	Learning more about musical styles- How does music make a difference to us every day?	Recognising different sounds- How does music connect us with our planet?
Art	Colour	Drawing	Pattern	Texture	Printing	3D Form
D.T	Simple Circuits and Switches		Levers and Linkages		Healthy and Varied Diet	
History	Stone Age: How did life change for ancient Britons during the Stone Age?	Romans: How did the arrival of the Romans change Britain?			Local Area Study	
Geography			Diverse Places.			
P.E	Games- Attack and Defend	Gymnastics- Pathways	Gymnastics- Symmetry and Asymmetry Dance	Games- Passing and catching Dance	Games- Keeping Possession Swimming	Games- Net/Racquet Athletics – Running, Throwing & Jumping
PSHE	How can we be a good friend?	What keeps us safe?	What are families like?	What makes a community?	Why should we eat well and look after our teeth?	Why should we keep active and sleep well?
Computing	Connecting Computers	Stop-Frame Animation	Sequencing Sounds	Branching Databases	Desktop Publishing	Events and Actions in Programmes
MFL	Name Age Basic greetings Numbers 1-12		Alphabet & decoding skills French sounds		Use vocabulary which discusses how I am. New greetings.	

# READING CHALLENGE/COMPETITION!

Your child's reading record will be collected in on a Friday. If they have read their book 5 times or more that week they will get a hole punch in their card. If they fill up their card they will earn a prize!

Once your child feels they are confident with their home reading book they can complete their quiz on accelerated reader. They can do this quiz at home (please see reading record on how to do this) or in school and then they can change their books following the quiz.



# TTRS

You can find your child's TTRS login at the back of their reading record. If possible, it would be great to see your child logging on at home. We will also run a daily TTRS challenge as part of our maths lessons.

Times tables to know by the end of year 3:

2, 5, 10, 3, 4, 8



# Date for the diary

22<sup>nd</sup> November – Year 3 class assembly





# General Information

- Names in/ on everything!
- Family Assemblies- Fridays at 9am
- Tuck money (25p for toast or a milkshake)
- Newsletters
- Small cloakroom = Small bags please!
- PE on Wednesday and Friday- Named kit in school and long hair tied back
- Named water bottle
- No toys from home in case they get lost or broken
- Hair up



# Class Information

- Homework is set on a Wednesday and should be returned by the following Monday
- Children will have a punch card as a reward for their homework
- Swimming lessons will take place in the summer term
- We use house points, stickers and the behaviour ladder to manage behaviour in our class. We will also send sch.life messages for good behaviour — so please keep an eye out!



# Any Questions?

